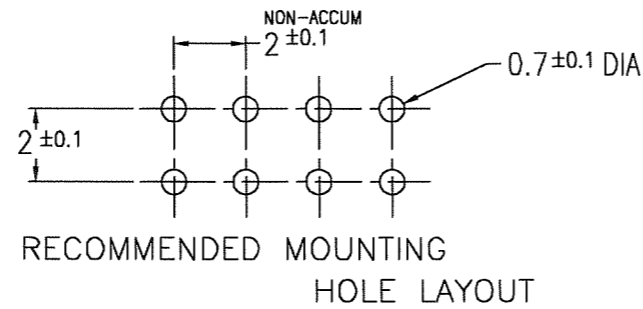


FCI CONFIDENTIAL

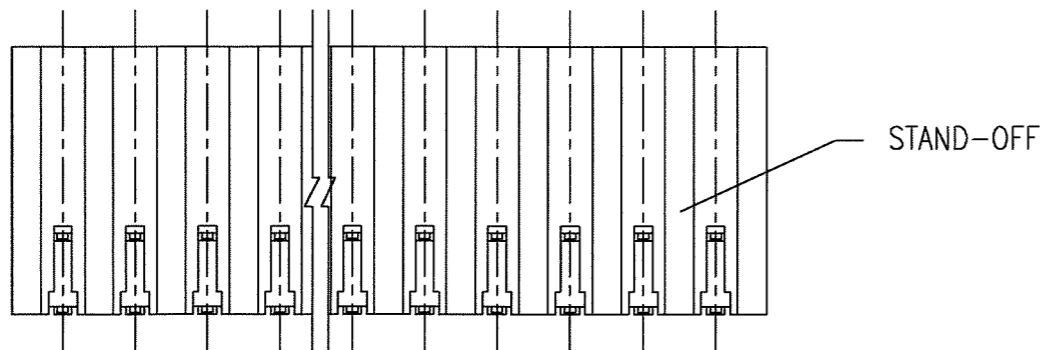
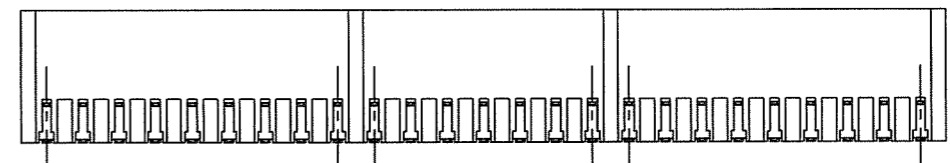
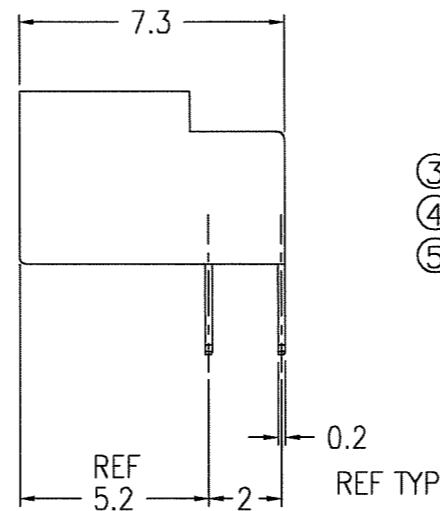
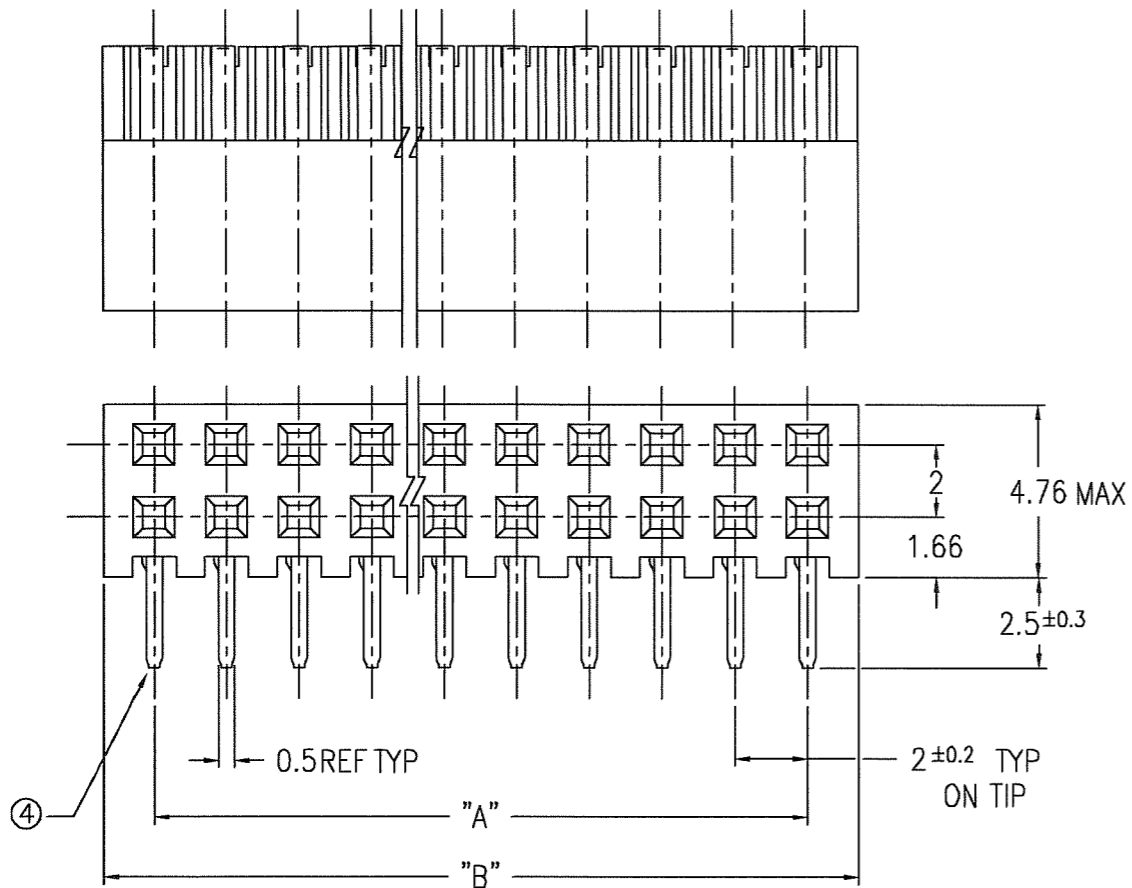
This document is the property of and embodies CONFIDENTIAL and PROPRIETARY information of FCI. No part of the information shown on this document may be used in any way or disclosed to others without the written consent of FCI. Copyright FCI.

PRODUCT NO.	"A"	"B"	PLATING
88333-040	38	40.8	SEE NOTE ②
-044	42	44.8	
-050	48	50.8	
88333-150	48	50.8	
88333-440LF	38	40.8	
-444LF	42	44.8	
-450LF	48	50.8	
88333-150LF	48	50.8	



NOTE:

- ① MATERIAL: HOUSING --- G.F.PBT  
UL 94V-0. BLACK  
TERMINAL --- PHOSPHOR BRONZE.
- ② 88333 - X XX  
  - 40, 44, 50 : 2X20, 2X22, 2X25  
NUMBER OF CONTACTS.
  - 0 : CONTACT AREA GOLD 0.2umMIN.  
SOLDERTAIL TIN/LEAD 2.5umMIN.
  - 1 : CONTACT AREA GOLD 0.76umMIN.  
SOLDERTAIL TIN/LEAD 2.5umMIN.
- 88333 - X XX LF  
  - LF PRODUCT NUMBER MEETS EUROPEAN UNION DIRECTIVES AND OTHER COUNTRY REGULATIONS AS DESCRIBED IN GS-22-008.
  - 40, 44, 50 : 2X20, 2X22, 2X25  
NUMBER OF CONTACTS.
  - 1 : CONTACT AREA GOLD 0.76umMIN.  
SOLDERTAIL PURE-TIN 2umMIN.
  - 4 : CONTACT AREA GOLD 0.2umMIN.  
SOLDERTAIL PURE-TIN 2umMIN.
- ③ CUT SURFACE IS UNPLATED.
- ④ GENERAL TOLERANCE: ±0.25
- ⑤ FEATURE OF 2X25 POSITIONS : SEE FIG.1.



mat'l. code				surface	tolerance	projection	product family	CODE	
SEE_NOTE_1				ISO 1302 ✓	ISO 406 ISO 1101		5MWF - MINITEK RECEPTACLE	JP	
ltr	description	ecn no	dr	date	tolerances unless otherwise specified		title		
D	REVISED	J05-0576	R.S	1/31/06	angles	0.X ±0.25	MINITEK HCC		
E	REVISED	J06-0115	R.S	4/16/06	linear	0.XX ±0.25			
F	REVISED	J06-0352	R.S	8/29/06	0'±X'	0.XXX ±0.25			
				dr	R.SHOUJI	8/29/06	dwg no		
				enr	R.SHOUJI	8/29/06	sheet 1 of 1		
				chr	<i>S. Oudan</i>	8/31/06	size		
				app	<i>S. Oudan</i>	8/31/06	A3		
sheet index		revision	F					type	
sheet		1					Product Customer Drawing		
								Rev.	
								F	